

Endoplasmic Reticulum Stress-Activated Cell Reprogramming in Oncogenesis

Eric Chevet, Claudio Hetz, Afshin Samali

► **To cite this version:**

Eric Chevet, Claudio Hetz, Afshin Samali. Endoplasmic Reticulum Stress-Activated Cell Reprogramming in Oncogenesis. *Cancer Discovery*, American Association for Cancer Research, 2015, 5 (6), pp.586-97. 10.1158/2159-8290.CD-14-1490 . hal-01152845

HAL Id: hal-01152845

<https://hal-univ-rennes1.archives-ouvertes.fr/hal-01152845>

Submitted on 18 Sep 2015

HAL is a multi-disciplinary open access archive for the deposit and dissemination of scientific research documents, whether they are published or not. The documents may come from teaching and research institutions in France or abroad, or from public or private research centers.

L'archive ouverte pluridisciplinaire **HAL**, est destinée au dépôt et à la diffusion de documents scientifiques de niveau recherche, publiés ou non, émanant des établissements d'enseignement et de recherche français ou étrangers, des laboratoires publics ou privés.

Endoplasmic Reticulum stress-activated cell reprogramming in oncogenesis

Eric Chevet^{1,2}, Claudio Hetz^{3,4,5}, Afshin Samali⁶

¹«Oncogenesis, stress & signaling», ER440 University of Rennes 1, F-35000, France; ²Centre de Lutte Contre le Cancer Eugène Marquis, F-35000 Rennes, France; ³Biomedical Neuroscience Institute, Faculty of Medicine, University of Chile, Santiago, Chile; ⁴Institute of Biomedical Sciences, Center for Molecular Studies of the Cell, Santiago, Chile; ⁵Department of Immunology and Infectious Diseases, Harvard School of Public Health, Boston MA 02115, USA. ⁶Apoptosis Research Centre, School of Natural Sciences, NUI Galway, Galway, Ireland.

Running title: UPR and cancer progression

Correspondance to: EC: ER440 «Oncogenesis, stress & signaling», Centre de Lutte Contre le Cancer Eugène Marquis, F-35000 Rennes, France. Phone : +33(0)223237258 ; electronic address: : eric.chevet@inserm.fr

CH: Laboratory of Cellular Stress and Biomedicine, Program of Cellular and Molecular Biology. Institute of Biomedical Sciences. Faculty of Medicine - University of Chile. 1027 Independencia. POBox 70086. Santiago, Chile. Phone: 56-2-2978-6506; electronic addresses: chetz@hsph.harvard.edu; chetz@med.uchile.cl

AS: Apoptosis Research Centre, National University of Ireland Galway, Ireland; School of Natural Sciences, National University of Ireland Galway, Ireland. Phone: +35391492440; electronic address: afshin.samali@nuigalway.ie

The authors declare no conflict of interests.

Stress induced by accumulation of unfolded proteins in the endoplasmic reticulum (ER) is observed in many human diseases including cancers. Cellular adaptation to ER stress is mediated by the unfolded protein response (UPR), which aims at restoring ER homeostasis. The UPR has emerged as a major pathway in remodeling cancer gene expression, thereby either preventing cell transformation or providing an advantage to transformed cells. UPR sensors are highly regulated by the formation of dynamic protein scaffolds, leading to integrated reprogramming of the cells. Herein, we describe the regulatory mechanisms underlying UPR signaling upon cell intrinsic or extrinsic challenges, and how they engage cell transformation programs and/or provide advantages to cancer cells, leading to enhanced aggressiveness or chemoresistance. We discuss the emerging cross-talks between the UPR and related metabolic processes to ensure maintenance of protein homeostasis, and its impact on cell transformation and tumor growth.

Significance - Endoplasmic Reticulum (ER) stress signaling is dysregulated in many forms of cancer and contributes to tumor growth as a survival factor, in addition to modulating other disease-associated processes, including cell migration, cell transformation, and angiogenesis. Evidence for targeting the ER stress signaling pathway as an anticancer strategy is compelling, and novel agents that selectively inhibit the UPR have demonstrated preliminary evidence of pre-clinical efficacy with an acceptable safety profile.

Canonical ER stress signaling, activation mechanisms and alterations in cancers

Since the discovery of an adaptive response against disrupted endoplasmic reticulum (ER) homeostasis through the up-regulation of specific ER resident chaperones (1), the so-called “ER stress response” has been the subject of many studies and reviewed extensively. ER stress results from the imbalance in the folding capacity of this organelle, thus leading to the accumulation of improperly folded proteins in its lumen. To restore ER proteostasis, the cell has evolved an integrated signaling network named the Unfolded Protein Response (UPR; (2)). The UPR is mainly transduced by three ER resident sensor proteins, Protein Kinase R-like Endoplasmic Reticulum Kinase (PERK; (3)), Activating Transcription Factor 6 alpha (ATF6 α ; (4)) and Inositol Requiring Enzyme 1 alpha (IRE1 α , named IRE1 thereafter; (5)) (**Figure 1**). The integrated signaling downstream of these three sensors tightly controls life or death decisions in cells exposed to either oncogenic (oncogene or tumor suppressors) or environmental (hypoxia, nutrient deprivation, pH) stresses. The mechanisms involved in sensing stress by the three UPR sensors are controlled by the ER chaperone BiP/GRP78. Under basal conditions BiP constitutively binds to the three sensors thus preventing their activation. Under ER stress, BiP dissociates from IRE1 α , PERK, and ATF6, thereby allowing their respective oligomerization and auto-transphosphorylation (6) or revealing an ER export motif in ATF6 (7).

PERK signaling - PERK oligomerization induces its autophosphorylation and the subsequent phosphorylation of the translation initiation factor eIF2 α , thereby attenuating global protein synthesis (8). Phosphorylation of eIF2 α and reduction of global translation also allows the bypass of a μ ORF upstream of ATF4 start codon leading to the selective translation of ATF4 (9). ATF4 is a transcription factor that controls the expression of genes involved in folding, antioxidant responses, autophagy, amino acid metabolism, and apoptosis (10). In addition, ATF4 promotes the transcription of CHOP and GADD34, the former is thought to control a pro-apoptotic response (11) whereas the latter being instrumental in the dephosphorylation of eIF2 α together with the phosphatase PP1c (12). Moreover, active PERK directly phosphorylates NRF2, which subsequently controls the antioxidant response pathway (13-15). More recently, PERK activation has been shown to lead to the phosphorylation of the transcription factor FOXO (16), thereby leading to enhanced FOXO activity and to decreased insulin responsiveness in *D. melanogaster*. In a similar manner, a cryptic lipid kinase activity was recently uncovered in PERK, thereby promoting the phosphorylation of Di-Acyl Glycerol (DAG) and its conversion to phosphatidic acid (17). Although these two observations were made in a metabolic context, either insulin

resistance in *D. melanogaster* or adipocyte differentiation, their impact on cancer cell metabolism might represent novel paths for therapeutic development. In summary, PERK signaling in cancer has been shown to contribute to adaptive pathways rather than to cancer cell death as demonstrated by the fact that a pharmacological inhibition of PERK attenuates tumor growth in mouse xenograft models (18, 19).

ATF6 signaling – ATF6 is a membrane anchored transcription factor whose activation mainly controls ER protein folding and quality control machineries. ATF6 activation upon ER stress requires export from the ER and cleavage in the Golgi apparatus by the proteases S1P and S2P (20, 21). Moreover, ATF6 export from the ER also depends on its cysteine oxidation status (22) as well as on the protein disulfide isomerase A5 (PDIA5) (23). ATF6 cytosolic domain (ATF6f) translocates to the nucleus where it activates specific transcriptional programs involved for example, in ER-associated degradation (ERAD) (24, 25). ATF6 belongs to a family of transmembrane transcription factors that comprises about 10 members with different functions in stress response (26). Recently, BBF2H7/CREB3L2, which is activated in a similar manner to ATF6, was found to exert its function not only through its transcription factor domain (27) but also through its luminal domain, which is secreted and acts as a growth factor (28). ATF6 main functions to date depend on its cytosolic transcription activator domain, which activates the transcription of genes involved in ER quality control and the folding molecular machinery (29). The role of ATF6 in cancer is yet poorly described but this stress sensor might contribute to tumor cell dormancy and chemoresistance through the regulation of adaptive pathways (23, 30).

IRE1 signaling - IRE1 activity, which was first reported in relation to the splicing of *XBP1* mRNA (31-34), is now also known to be involved in the degradation of RNA (known as regulated IRE1-dependent decay, or RIDD (35)), including mRNAs (36, 37), ribosomal RNA (38), and microRNAs (39, 40). In humans, IRE1 catalyzes the excision of a 26-nucleotide intron on *XBP1* mRNA, shifting the coding reading frame resulting in the expression of a stable and active transcription factor known as XBP1s. XBP1s controls genes involved in protein folding, secretion, ERAD, and lipid synthesis (41). In addition, XBP1s forms functional dimers with ATF6f to control distinct gene expression patterns (42). The unspliced XBP1u is suggested to play regulatory roles in i) the efficient delivery of its own mRNA to the ER for processing and ii) controlling the degradation of XBP1s (43). The mechanisms regulating the switch from *XBP1* splicing to RIDD activity were recently suggested *in vitro* by showing that IRE1 dimers are more active in RIDD, whereas IRE1 oligomers are responsible for *XBP1* mRNA splicing (44). This model is in agreement with previous results correlating IRE1 oligomerization with enhanced *XBP1* mRNA splicing (45).

IRE1 RNase activity was also linked to its phosphorylation status at key residues (i.e., Ser724), although the remaining identified phosphorylation sites remain to be functionally tested (46) and in yeast other phosphorylation sites mediate its inactivation (47, 48). Very recently, four studies have reported the mammalian XBP1s mRNA ligase as the tRNA ligase RtcB (49-52). Beyond its role in XBP1 mRNA splicing, IRE1 RNase is also involved in the direct degradation of mRNAs, an activity named Regulated IRE1 Dependent Decay (RIDD). Through RIDD IRE1 cleaves substrate RNAs including cancer-relevant mRNA such as PDFGR, SPARC or Period1 mRNA (35) and cancer relevant microRNAs such as miR-17 or miR-96 (40). Finally, IRE1 activation has also been linked to the activation of the ASK1/JNK1 signaling cascade through the recruitment of TRAF2 to IRE1 (53) although this could also occur through the cleavage of miR-17 via the control of TXNIP (39). Altogether these recent discoveries shed light on the complexity of the signaling mechanisms downstream of IRE1, which involve both transcriptional and post-transcriptional regulations. Moreover, these data provide more insights into the UPR-dependent biological networks that orchestrate ER protein homeostasis (proteostasis) recovery. The understanding of how these signaling networks are altered in cancer could unravel novel and original therapeutic avenues.

Pro-oncogenic potential of the three UPR branches - The contribution of the UPR to oncogenic processes was first proposed in 2004 (54) and is now well accepted by the community. More recently, somatic mutations have been found in genes coding for UPR sensors and reported in genome-wide sequencing studies (55). For example, three independent studies identified mutations in *IRE1* in cancers (55), including glioblastoma (56) and hepatocellular carcinoma (57). Since then, the number of cancer-associated mutations in the three UPR sensor-encoding genes has risen (**Figure 2A**) and been documented in the COSMIC database (58). Interestingly, the somatic mutation profiles of *PERK*, *IRE1*, and *ATF6* are distinct, with missense mutations enriched in *PERK*, nonsense mutations enriched in *ATF6*, and silent mutations enriched in *IRE1* (**Figure 2A**). Similarly, the spectrum of in-frame variations, splicing, or frameshift mutations was also different for the three UPR sensors, with a predominance of in frame deletions and insertions observed for *IRE1* (**Figure 2A**). The biological causes and consequences of such mutation spectra have been partly investigated in non-cancer relevant experimental systems (59), however these mutations on UPR sensors could represent novel avenues for the selective targeting of tumors. Moreover, the incidence of mutations found in the genes encoding the three sensors also exhibited tissue specificity (**Figure 2B**). Indeed, integration of mutation rates reported in three databases (COSMIC, cBioportal and IntOGen) revealed higher mutation rates of *PERK* in bone cancers ("other", **Figure 2B**). *IRE1* somatic mutations appear to be

predominant in cancers of the nervous system, thereby confirming previous functional observations made in glioblastoma (60). Interestingly, *IRE1* and *ATF6* mutations are more frequently found in gastrointestinal cancers, which are most prone to exhibit mutations in the 3 UPR sensor-encoding genes (**Figure 2B**). Finally, *PERK* and *ATF6* were highly mutated in urologic and lung cancers, whereas *ATF6* mutations were predominant in genital cancers. Although the biological relevance of these mutations remains to be fully elucidated in terms of functionality (activating/inactivating, expression of the sensors, signaling specificity and impact on tumor phenotypes), the roles of each arm of the UPR have been illustrated in several cancers (**Figure 2C**). For instance, Myc-induced lymphomas require the overactivation of the PERK/ATF4 pathway and autophagy induction for complete transformation (61). This was also recapitulated in *Drosophila* models, thus pointing towards the use of such tools to decipher the underlying genetic networks (62). Moreover, overactivation of the ATF6 pathway, most likely through high expression levels of PDIA5, confers resistance to Imatinib in chronic myeloid leukemia cells, and therefore inhibiting Protein Disulfide Isomerases (PDI) restored Imatinib sensitivity (23). Finally, the IRE1 arm of the UPR, and in particular the splicing of *XBP1* mRNA, were found to be overactive in triple-negative breast cancers (TNBC), thereby conferring on these tumor cells a highly aggressive phenotype (63) (**Figure 2C**).

Transcriptional reprogramming by the UPR

The initial view of the impact of the UPR on adaptation processes directed against disturbances in ER proteostasis proposed the existence of linear pathways that control well-defined subsets of target genes, and thus unique signaling outputs. The discovery of novel functions of UPR transcription factors in the physiology of diverse organs has changed this simplistic vision, enforcing a concept where, depending on (i) the input or the stimuli (stress-dependent or -independent) and (ii) the cell type affected (i.e., the context: secretion-specialized cells or not), the population of target genes engaged can dramatically differ, affecting cellular functions that may not have been predicted to rely on ER stress (i.e., involved in restoring ER proteostasis) (64). The selective reprogramming of gene expression by the UPR is fine-tuned, in part by the formation of heterodimeric transcription factors, in addition to posttranslational modifications and the crosstalk of UPR stress sensors with other cancer-relevant signaling pathways. In this section, we highlight a few examples demonstrating specific mechanisms underlying the selective control of gene expression programs by the UPR in a context-dependent manner.

UPR transcription factor networks - Gene expression profile analysis in classic *in vitro* models of ER stress (i.e., pharmacological perturbation to ER physiology) have suggested that most of the UPR target genes are involved in almost every aspect of the secretory pathway, including folding, quality control, ERAD, trafficking, redox control, lipid synthesis, and in more distantly related functions such as apoptosis and autophagy (24, 65-68). Interestingly, a recent report suggested that XBP1s and ATF6f form heterodimers that drive a distinct pattern of gene expression compared with that of the respective homodimers, thereby influencing the folding, trafficking, and degradation of destabilized ER client proteins (42). The transcriptional activity of ATF6 is also determined by its binding to different cofactors and transcription factors, including NF-Y/CBF, YY1, and TATA-binding protein (TBP) (25, 69, 70) and by phosphorylation (71). XBP1s is regulated by acetylation and sumoylation, in addition to phosphorylation through p38 (72-74). Similarly, ATF4 interacts with different transcription factors and is also regulated by posttranslational modifications, including phosphorylation, ubiquitination, and acetylation which impact on protein stability and thereby its availability for activating transcription (reviewed in (75)). A recent report assessed the regulatory network governed by ATF4 and CHOP, and indicated that these transcription factors may not occupy the promoters of genes involved in apoptosis (76). Instead, ATF4 and CHOP were shown to form heterodimers that control genes involved in autophagy and mRNA translation, which may lead to ATP depletion and oxidative stress (76). Hence, the regulation of gene expression by the UPR is complex and involves multiple dynamic mechanisms and control checkpoints.

The physiological role of XBP1 is mostly attributed to sustaining the function and differentiation of specialized secretory cells due to their high demand for protein folding and secretion (41). A genome-wide screen to define the regulatory network under ER stress revealed that, in addition to classical secretory pathway components, XBP1s modulates the expression of a cluster of genes related to cell differentiation, DNA repair pathways, and key genes involved in brain and muscle diseases (66). Mist1, a master regulator of cell differentiation, was identified in this study as a direct target of XBP1s, which was then functionally validated *in vivo* in the differentiation of gastric zymogenic cells (77). During B lymphocyte differentiation, the engagement of the B cell receptor has been proposed to regulate plasma cell differentiation through signaling events that depend on *XBP1* mRNA splicing associated with the attenuation of the transcriptional repressors IRF4 and BLIMP1 (68, 78). These studies suggest that XBP1 has relevant functions in cell differentiation that are beyond the control of protein folding stress through the modulation of well-defined gene expression programs which when dysregulated could impact on tumor cell's adaptive properties to selective environments.

Collectively, this information provides a global picture of a cancer-relevant interconnected network of UPR-activated transcription factors, which not only interact with each other but also are able to form specific complexes with other stress-relevant transcription factors (see below). These events may specifically modulate the UPR transcriptional responses and thus cancer cells' ability to cope with their altered metabolism and the challenging microenvironment.

Transcriptional reprogramming in cancer cells – Although the role of the UPR in the survival and positive selection of cancer cells in solid tumors has been well established for over a decade, a deeper knowledge of the mechanisms of action of ER stress signaling in cancer biology has only recently become available. In addition to operating as an adaptive mechanism to the microenvironmental changes observed in cancer, the UPR is now recognized as a relevant component that determines cell transformation and metastatic potential, in addition to its regulation of cell dormancy, genomic stability, angiogenesis, immunogenic tolerance, and the metabolic status of the cell (79). These findings have suggested that targeting the proteostasis network may be therapeutically beneficial in cancer. One of the best examples in terms of demonstrating the therapeutic potential of targeting the proteostasis network in cancer is the use of the proteasome inhibitor bortezomib for the treatment of multiple myeloma (80). Bortezomib was shown to trigger chronic ER stress, reflected in overactivation of PERK, which may sensitize cells to apoptosis (81). Recently, pharmacological inhibitors targeting the PERK kinase domain were developed and shown to reduce pancreatic tumor growth in xenograft models (18, 19). However, as PERK plays essential roles in pancreatic beta cells' functions, the use of PERK inhibitors might have deleterious secondary effects on the organ. Interestingly, a novel compound termed ISRIB that blocks ATF4 expression (82), was recently shown to overcome the deleterious side effects of PERK inhibitors on pancreas (83). Importantly, *in vitro* studies also indicated that bortezomib might actually inhibit *XBP1* mRNA splicing, abrogating the prosurvival consequences of this UPR signaling branch (84). This finding motivated the search for small molecules that block the RNase activity of IRE1 as a possible anti-cancer agent. In fact, several compounds have been identified that selectively block *XBP1* splicing (i.e. STF-083010 and MKC-3946), and have important antitumor effects in preclinical models of multiple myeloma (reviewed in (85)). IRE1 inhibitors also synergize with bortezomib in the killing of cancer cells. In agreement with these findings, *XBP1*s overactivation has been suggested to be part of the etiology of multiple myeloma, as ectopic overexpression of *XBP1*s in the lymphoid compartment in transgenic mice led to the spontaneous development of phenotypic alterations resembling multiple myeloma (86). This oncogenic transformation process was accompanied by the unexpected engagement of a gene expression signature

involving a variety of genes linked to the human disease, including Cyclin D1, Cyclin D2, MAF, MAFB and IL6-dependent pathways.

Recent advances have highlighted the contribution of genomic reprogramming by the UPR as a determinant of cancer prognosis. *XBP1s* is an estrogen-regulated gene and its levels strongly correlate with estrogen receptor α expression in breast cancer (87). Consistent with this idea, *XBP1* was shown to modulate estrogen receptor expression (88). A recent study of adaptive UPR responses in the absence of pro-apoptotic responses uncovered the induction of estrogen-dependent gene expression signatures as a possible effect of the UPR (89). *XBP1* may also control cell survival in estrogen receptor-positive cells through modulation of NF κ B p65/RelA expression (90), and overexpression of *XBP1* in estrogen receptor α -positive breast cancer cells can lead to anti-estrogen resistance by regulating genes associated with apoptosis and cell-cycle progression (91) as well as to estrogen-induced tumor growth (87).

In addition, activation of *XBP1* mRNA splicing was recently shown to enhance the tumorigenicity and progression of TNBC cells (63) by assembling a transcriptional complex with hypoxia-inducible factor 1 α (HIF1 α) to regulate the expression of HIF1 α target genes. As such TNBC growth is dependent on *XBP1*-mediated regulation of the HIF1 α transcriptional program. The gene expression signature controlled by *XBP1s* in breast cancer includes vascular endothelial growth factor (VEGF), a central pro-angiogenic factor, as well as genes related to cell proliferation, cell growth and differentiation, cytoskeletal rearrangement, and cell survival (63). Remarkably, analysis of *XBP1s*-dependent gene expression signatures in patients with TNBC revealed that this pattern highly correlated with HIF1 α function and predicted poor prognosis. This finding revealed an unexpected crosstalk of the UPR with HIF1 α in the reprogramming of cancer cells toward cell transformation. Although this has been proved in TNBC, *XBP1* splicing is observed in numerous cancer cell lines and tumors under unstressed conditions, but this needs further investigation to demonstrate a causal relationship with tumor aggressiveness.

High expression of *XBP1* can also predict a poor outcome in pre-B acute lymphoblastic leukemia at the time of diagnosis (92), and pharmacological inhibition of IRE1 α resulted in efficient killing of pre-B lymphoblastic leukemia cells (92, 93). In these cells, *XBP1* deficiency resulted in the acquisition of phenotypes that are disadvantageous for leukemia cell survival, including compromised BCR signaling capability and increased surface expression of sphingosine-1-phosphate receptor 1, this occurred most likely through the attenuation of the adaptive capacity of the secretory pathway and the subsequent impact on both intrinsic cellular metabolism and tumor microenvironment. Similarly, high levels of *XBP1s* may also predict a better outcome for the treatment of multiple myeloma patients with

bortezomib, most likely through an established addiction to the signals mediated by this transcription factor (94, 95).

In summary, accumulating evidence suggests that the UPR is a relevant driver of oncogenic transformation that could be used for prognosis. Measuring XBP1-dependent and -independent gene expression responses may serve as a biomarker to predict the evolution of disease progression. It remains to be determined if similar observations are recapitulated with ATF4 and ATF6.

Tumor microenvironment and ER stress – An acquired feature of malignant cells is the ability to rewire their metabolism to support sustained growth (96). Indeed, the nutrient requirements eventually exceed the capacity of the cells' microenvironment due to inadequate vascularization, thus leading to hypoxia and nutrient limitation. To survive these environmental stresses, tumor cells induce adaptive responses including the UPR (54). The UPR has critical functions beyond adjusting proteostasis. For example, the PERK-ATF4 branch upregulates VEGF to induce angiogenesis (97). Moreover, it is now becoming clear that the UPR can directly participate in the reprogramming of tumor metabolism by selectively activating biosynthetic pathways. Indeed, it is well established that ER stress signaling pathways control protein synthesis, folding, and degradation machineries (98). This is illustrated by the direct regulation of protein synthesis through PERK-mediated phosphorylation of eIF2 α (99), IRE1-mediated RNA degradation (35), and control of the expression of ER proteins involved in folding or degradation (98). Changes in proteostasis have been associated with tumor-associated gain-of-functions that can be reversed using proteostasis modulators such as proteasome inhibitors that overcome the adaptive capacity of the UPR and induce cell death (85). The PERK/ATF4 branch is also known to regulate catabolic pathways such as autophagy through ATF4-dependent induction of autophagy genes (100) and to modulate amino acid and lipid metabolism, again through ATF4-mediated induction of select targets.

In the tumor microenvironment, XBP1s is part of a response that mediates the transcriptional induction of UDP-galactose 4-epimerase to generate substrates for protein glycosylation, thereby coping with the increased protein folding and post-translational demand in tumor cells (101). In addition, the constitutive splicing of XBP1 drives tumorigenicity by assembling a transcriptional complex with HIF1 α , which activates a transcriptional program that upregulates glycolytic proteins, including glucose transporter 1 (GLUT1) (63). XBP1 also controls the expression of the hexosamine biosynthetic pathway (102) and negatively regulates the levels of the transcription factor FOXO1, thereby impacting energy control and glucose metabolism, both controlled by genes dependent on

FOXO1-mediated transcription (103) as well as ER homeostasis (104, 105). This provides a potentially cancer-relevant link between IRE1 and PERK signals as both stress sensors can regulate the functionality of FOXO transcription factors (16). These studies indicate that XBP1s actively promotes the stimulation of glucose uptake by cancer cells. Notably, XBP1 appears to have more than one effector to ensure the same biological output, namely cancer cell adaptation to intrinsic demand and/or extrinsic challenges.

In addition, accumulating evidence suggests that the UPR signaling network is associated with other cancer-relevant signaling pathways and modulates the activity of various transcription factors (i.e., c-JUN, MAPK, CREB, NRF2, HIF1 α , NF κ B, mTOR, AKT) to generate distinct gene expression patterns associated with tumor phenotypes including aggressiveness or angiogenesis (reviewed in (43)). Thus, it is predicted that in cancer cells, therapeutic targeting of the UPR may have unpredicted effects (i.e., independent of protein misfolding in the ER) beyond protein folding stress that may depend on the transformed cell type (i.e., secretory capacity of the cell, nature of the oncogenic stimulation, stage of the transformation).

In addition, in order to generate additional energy supply under environmentally induced starvation, cancer cells also have the capacity to trigger ER stress-dependent autophagic pathways. As such, the PERK/eIF2 α /ATF4 pathway is activated upon hypoxia in tumor cells (9) and protects these cells from environmental damage (106) through autophagy via LC3B and ATG5 (107). Similarly, a link was established between IRE1 signaling and autophagy induction through the binding of TRAF2 to IRE1 and the downstream activation of JNK (108). This pathway is repressed under nutrient starvation conditions by the ER located protein BI-1/TMBIM6 (102), a negative regulator of IRE1 (103) that plays an essential role in numerous cancers (109, 110). Thus, it is easily conceivable that, as for PERK, IRE1 might represent a significant player in the control of autophagy in response to environmental challenges. In addition, genetic inactivation of XBP1 has been shown to switch the proteostasis network toward autophagy upregulation, which could generate adaptive advantages by i) actively removing proteotoxic aggregates caused by the imbalance between the protein folding demand and the protein folding capacity of the tumor cell, and ii) providing nutrients through catabolic processes and therefore compensating for environmental nutrient starvation (111). These studies illustrate a highly dynamic network that controls cancer cells' ability to adapt and resist environmental stresses through UPR-dependent mechanisms.

ER stress and DNA damage/repair – Although less explored, recent evidence suggests that ER stress may also affect genomic stability and DNA repair pathways, which

may contribute to oncogenic transformation. Bidirectional regulation between the UPR and DNA damage responses has been shown in various experimental systems (112-116), suggesting a dynamic feed-forward homeostatic regulation that controls the stability of the proteome and genome. Studies in yeast uncovered a relevant function of IRE1p in maintaining the stability of the genome (117, 118). IRE1p deficiency led to chromosome loss under basal conditions, a phenomenon that was further enhanced when DNA damage was generated by UV exposure. Although these findings have not been validated in mammalian cells, global assessment of the XBP1s regulatory network identified a cluster of DNA damage and repair genes as direct targets of XBP1, as mentioned above (66). However, the functional contribution of these genes to the ER stress response is unknown. A better understanding of why and how ER stress signals control DNA damage/repair pathways and the impact this crosstalk could have in cancer is therefore required.

ATM-deficient cells undergo hyperactivation of IRE1 when exposed to ionizing radiation (119), and both p53-deficient cells and ATM-deficient cells develop spontaneous alterations in ER proteostasis (119-121). Crosstalk between the UPR and p53 has been reported in many studies (see examples in (122-125)), which may influence gene expression toward cell adaptation or induction of apoptosis, and thus determine cancer cell fate. For example, a recent report provided evidence suggesting that UPR signaling modulates the function of a p53 isoform (122). In addition, ER stress may affect the cell cycle and protein translation in a p53-dependent manner (123, 124). p53 is also a relevant mediator of ER stress-dependent apoptosis through the transcriptional upregulation of the BCL-2 family members PUMA and NOXA (125), and interestingly, p53-deficient mice exhibit constitutive ER stress (120).

Genetic inactivation of PERK also results in genomic instability, possibly due to uncontrolled ROS production (126) most likely through a signals emanating from the Mitochondrial Associated Membranes (MAMs) (127), and crosstalk between PERK signaling and DNA repair pathways has been reported (128). Finally, genomic instability associated with the generation of tetraploid cells involves basal levels of ER stress, with exposure of the ER chaperone calreticulin at the cell surface, contributing to immunogenic cell death, again this could occur through the roles played by PERK in MAMs and thus regulating intracellular calcium fluxes and ROS production (129). In summary, these studies suggest a link between ER stress signaling and DNA damage/repair mechanisms involving, in part, p53. Although this subject is predicted to have high relevance for cancer cell proteostasis, as illustrated by the increasing number of reports describing linking protein homeostasis to transcriptional and genome maintenance events (130, 131), further functional studies are required for validation in cancer models *in vivo*.

ER stress-mediated post-transcriptional signaling networks

Post-transcriptional regulation represents a significant mechanism by which the UPR influences cancer development. This phenomenon can either be achieved through the direct degradation of select mRNAs or modulation of the expression of post-transcriptional regulators, such as microRNAs. Indeed, non-coding RNAs have been described to positively or negatively impact on the ER stress response (**Figure 3**) through either specific targets or through yet unclear mechanisms.

MicroRNAs and ER stress in cancer - miRNAs have been shown to influence apoptosis induction under ER stress through different targets. For example, overexpression of the miR-23a~27a~24-2 cluster upregulates pro-apoptotic components such as CHOP, TRIB3, ATF3, and ATF4 (132). Other miRNAs can modulate the amplitude of UPR signaling, including miR-122, which represses ER stress signals in hepatocellular cancers through a CDK4-PSMD10 pathway (133), and miR-214, which promotes ATF4 downregulation (134) and targets XBP1 expression through a yet unclear mechanism (135). Reciprocally, ER stress suppresses the expression of the miR-199a/miR-214 cluster in hepatoma cells through an NF κ B dependent pathway (135), suggesting that the miR-199a/miR-214 cluster might represent an example of miRNAs as both regulators and effectors of the UPR. In addition, miR-708 expression is controlled by CHOP and contributes to brain metastasis (136). PERK signaling has been shown to regulate the expression of miRNAs involved in the subsequent modulation of the UPR. For example, repression of the miR-106b-25 cluster by PERK signaling is required for the induction of Bim and apoptosis during ER stress (137). Moreover, PERK activation also promotes the expression of miR-30-c-2*, which represses the expression of XBP1 (138), and miR-211, which results in ER stress-dependent attenuation of CHOP expression (139). These examples illustrate how miRNA-dependent signaling circuits are tightly regulated downstream of the UPR (**Figure 3**). Collectively, these observations point toward an additional layer of complexity in the orchestration of the ER stress response, allowing for the tight control of selected transcriptional programs that regulates, not only the survival/death balance, but also other specific tumor features (i.e., invasion/migration or control of the tumor stroma).

ER stress-dependent RNA stability in cancer - RNA degradation upon ER stress has been described to occur through Nonsense-Mediated RNA Decay (NMD) (140) and through RIDD (35). NMD is an mRNA quality control mechanism known to destabilize aberrant mRNAs that contain premature termination codons. NMD was recently shown to determine

the threshold of stress necessary to activate the UPR, in addition to adjusting the amplitude of downstream responses and the termination phase. These effects were mapped to the control of the mRNA stability of *IRE1*, highlighting the dynamic crosstalk between mRNA metabolism and the proteostasis network. Although NMD has not yet been linked directly to cancer development, RIDD has been illustrated to be involved in tumor-specific phenotypes in several instances. In glioblastoma, IRE1-mediated decay of the circadian regulator *Period1* was shown to increase tumor inflammation and infiltration properties, most likely through the secondary transcriptional regulation of gene expression (60). Moreover, in the same type of tumors, IRE1 was identified to cleave *SPARC* mRNA, thereby leading to changes in the collective vs. individual migration of glioblastoma cells and reducing cell migration (141). The pro-oncogenic Glypican-3 (GPC3) was also identified as a substrate of IRE1 RNase in hepatocellular carcinoma (142) (**Figure 3**). These studies provide clues about the possible contribution of IRE1 inactivation through genetic mutation in cancer, however even though IRE1 appears globally to act as a prosurvival factor in cancer, the precise underlying mechanisms remain to be fully characterized and one might also predict that the different enzymatic activities of this protein (kinase/RNase) and substrate selectivity (mRNA, XBP1, rRNA or miRNA) will impact on tumor and stromal cell fate.

A systematic analysis of RIDD substrates in different cancer models therefore becomes necessary to identify the relevant networks to possibly be either genetically or pharmacologically targeted and to clarify the mechanisms involved in cell death signaling driven by IRE1 (reviewed in (143)). RIDD activity increases proportionally with ER stress intensity, inducing the degradation of mRNA substrates required for cell survival and cell growth and thus leading to cell death (35). For example, RIDD induces the decay of several miRNA precursors, such as that of miR-17 (40), which represses the expression of the pro-oxidant thioredoxin-interacting protein (TXNIP) that contributes to the activation of the NLR family pyrin domain containing 3 (NLRP3) inflammasome (39). The decay of pre-miR-17 by RIDD increases TXNIP expression, NLRP3 inflammasome activation, and the subsequent cleavage of pro-caspase-1 and secretion of IL-1 β , thereby inducing systemic or local inflammatory responses and promoting cell death (39) (**Figure 3**). In addition, the cleavage of pre-miR-17 by IRE1 was found to derepress caspase-2 expression and promote ER stress-induced apoptosis (40). However, the contribution of caspase-2 to UPR-mediated cell death remains unclear (144). Mir-17 is the only validated miRNA whose expression has been shown to be directly regulated by IRE1-mediated cleavage (40), and has been shown to be involved in tumor aggressiveness in glioblastoma (145), hepatocellular carcinoma (146) and prostate (147), kidney (148), gastric (149) and colon (150) cancers. However, IRE1 has also been implicated in the degradation of other pre-miRNAs that are involved in cancer

development, such as miR-96, whose overexpression has been observed in bladder (151), prostate (152) and breast (153) cancers and has been shown to possess tumor-suppressor functions in pancreatic cancer (154). Overall, since RIDD targets are thought to depend on the cellular context (abundance of the respective substrates in a given cell type), the stimuli engaging IRE1 (nature of the UPRosome formed as well as size of the oligomers) and the presence of somatic mutations altering IRE1 conformation, we predict that this specific output of the UPR, together with the expression of classical ER stress transcription factors, will drive distinct gene expression patterns that affect multiple aspects of cancer biology including control of i) the tumor cells death/survival balance, ii) tumor cells invasion and metastasis properties and iii) the nature of the tumor stroma.

Concluding remarks

Over the past decade, we have witnessed major advances in our understanding of the contribution of the UPR to oncogenesis and the acquisition of chemoresistance in cancer cells. There are now many new open questions that need to be addressed with regard to the role of the UPR in cancer. Two key problems to be solved are “when is a stress too much?” and “what is the quantitative contribution of specific ER stress signaling modules during malignant transformation?” Indeed, many cancer cells die during transformation, tumor formation, and metastasis due to their inability to cope with the combined oncogenic and microenvironmental stresses. However, tumors that develop following the selection process often have a high basal UPR and, in particular, high IRE1 or PERK activities. Although this high basal UPR activity confers a survival advantage to the tumor cells, it also keeps the cells on edge, so that either dampening the UPR response (e.g., by inhibition of different arms of the UPR) in the face of the continued stress signals or increasing stress levels (e.g., administration of chemotherapy) will tip the balance in favor of cell death. One could also anticipate different roles played by each arm of the UPR at distinct stages of tumor progression including (i) initial stages of oncogene-induced cell transformation, (ii) tumor vascularization, (iii) metastasis including extravasation, (iv) survival in the blood flow and then (v) intravasation and growth in the hosting niche.

Another question that is linked to the focus of this review is what determines the switch between pro-survival and pro-death UPR signals? This is an area of much interest, as the answer to this question should allow the development of novel drugs that selectively tip the balance in favor of pro-death UPR signals as an anticancer therapeutic strategy. However, evidence to date suggests that the mechanisms underlying cell fate control under ER stress are unlikely to be so simplistic and that a greater understanding of the UPR under different ER stress-inducing conditions (i.e., oncogene expression, nutrient deprivation) and in different cellular contexts (i.e., tumor cell type or subtype) is needed to predict how UPR -

targeting drugs might affect tumor growth and progression. In particular, a better understanding of the UPR itself is needed, in addition to its integration with other signaling pathways and how it relates to cell fate control. Such an understanding would pave the way for personalized treatment of cancer based on a patient's tumor cell type and the activation status of UPR-related signaling networks.

Acknowledgements

We apologize to all colleagues whose work could not be cited owing to space limitations. Our work was funded by grants from Institut National du Cancer (INCa) and Ligue Nationale Contre le Cancer (Comités des Landes) to EC, a French-Chilean program exchange grant from ECOS-CONICYT C13S02 to EC and CH. This work was also funded by FONDECYT no. 1140549, Millennium Institute no. P09-015-F and Ring Initiative ACT1109 grants to CH. We also thank CONICYT-USA2013-0003, Michael J. Fox Foundation for Parkinson's Research, COPEC-UC Foundation, FONDEF no. D1111007, and the Frick Foundation (to CH). The research in AS laboratory is supported by the Irish Cancer Society (CRS11CLE), the Breast Cancer Campaign (2010NOVPR13) and the Belgian grants - Interuniversity Attraction Poles, IAP 7/32.

References

1. Kozutsumi Y, Segal M, Normington K, Gething MJ, Sambrook J. The presence of malfolded proteins in the endoplasmic reticulum signals the induction of glucose-regulated proteins. *Nature*. 1988;332:462-4.
2. Cox JS, Walter P. A novel mechanism for regulating activity of a transcription factor that controls the unfolded protein response. *Cell*. 1996;87:391-404.
3. Shi Y, Vattam KM, Sood R, An J, Liang J, Stramm L, et al. Identification and characterization of pancreatic eukaryotic initiation factor 2 alpha-subunit kinase, PEK, involved in translational control. *Mol Cell Biol*. 1998;18:7499-509.
4. Haze K, Yoshida H, Yanagi H, Yura T, Mori K. Mammalian transcription factor ATF6 is synthesized as a transmembrane protein and activated by proteolysis in response to endoplasmic reticulum stress. *Mol Biol Cell*. 1999;10:3787-99.
5. Mori K, Ma W, Gething MJ, Sambrook J. A transmembrane protein with a cdc2+/CDC28-related kinase activity is required for signaling from the ER to the nucleus. *Cell*. 1993;74:743-56.
6. Bertolotti A, Zhang Y, Hendershot LM, Harding HP, Ron D. Dynamic interaction of BiP and ER stress transducers in the unfolded-protein response. *Nat Cell Biol*. 2000;2:326-32.
7. Shen J, Chen X, Hendershot L, Prywes R. ER stress regulation of ATF6 localization by dissociation of BiP/GRP78 binding and unmasking of Golgi localization signals. *Dev Cell*. 2002;3:99-111.
8. Ron D, Walter P. Signal integration in the endoplasmic reticulum unfolded protein response. *Nat Rev Mol Cell Biol*. 2007;8:519-29.
9. Blais JD, Filipenko V, Bi M, Harding HP, Ron D, Koumenis C, et al. Activating transcription factor 4 is translationally regulated by hypoxic stress. *Mol Cell Biol*. 2004;24:7469-82.
10. Ye J, Koumenis C. ATF4, an ER stress and hypoxia-inducible transcription factor and its potential role in hypoxia tolerance and tumorigenesis. *Curr Mol Med*. 2009;9:411-6.
11. Zinszner H, Kuroda M, Wang X, Batchvarova N, Lightfoot RT, Remotti H, et al. CHOP is implicated in programmed cell death in response to impaired function of the endoplasmic reticulum. *Genes Dev*. 1998;12:982-95.
12. Novoa I, Zeng H, Harding HP, Ron D. Feedback inhibition of the unfolded protein response by GADD34-mediated dephosphorylation of eIF2alpha. *J Cell Biol*. 2001;153:1011-22.
13. Del Vecchio CA, Feng Y, Sokol ES, Tillman EJ, Sanduja S, Reinhardt F, et al. De-differentiation confers multidrug resistance via noncanonical PERK-Nrf2 signaling. *PLoS Biol*. 2014;12:e1001945.
14. Cullinan SB, Zhang D, Hannink M, Arvisais E, Kaufman RJ, Diehl JA. Nrf2 is a direct PERK substrate and effector of PERK-dependent cell survival. *Mol Cell Biol*. 2003;23:7198-209.
15. Cullinan SB, Diehl JA. PERK-dependent activation of Nrf2 contributes to redox homeostasis and cell survival following endoplasmic reticulum stress. *J Biol Chem*. 2004;279:20108-17.
16. Zhang W, Hietakangas V, Wee S, Lim SC, Gunaratne J, Cohen SM. ER stress potentiates insulin resistance through PERK-mediated FOXO phosphorylation. *Genes Dev*. 2013;27:441-9.
17. Bobrovnikova-Marjon E, Pytel D, Riese MJ, Vaites LP, Singh N, Koretzky GA, et al. PERK utilizes intrinsic lipid kinase activity to generate phosphatidic acid, mediate Akt activation, and promote adipocyte differentiation. *Mol Cell Biol*. 2012;32:2268-78.
18. Axten JM, Medina JR, Feng Y, Shu A, Romeril SP, Grant SW, et al. Discovery of 7-methyl-5-(1-([3-(trifluoromethyl)phenyl]acetyl)-2,3-dihydro-1H-indol-5-yl)-7H-pyrrolo[2,3-d]pyrimidin-4-amine (GSK2606414), a potent and selective first-in-class inhibitor of protein kinase R (PKR)-like endoplasmic reticulum kinase (PERK). *J Med Chem*. 2012;55:7193-207.

19. Atkins C, Liu Q, Minthorn EA, Zhang S, Figueroa DJ, Moss KG, et al. Characterization of a novel PERK kinase inhibitor with anti-tumor and anti-angiogenic activity. *Cancer Res.* 2013.
20. Shen J, Prywes R. Dependence of site-2 protease cleavage of ATF6 on prior site-1 protease digestion is determined by the size of the luminal domain of ATF6. *J Biol Chem.* 2004;279:43046-51.
21. Ye J, Rawson RB, Komuro R, Chen X, Dave UP, Prywes R, et al. ER stress induces cleavage of membrane-bound ATF6 by the same proteases that process SREBPs. *Mol Cell.* 2000;6:1355-64.
22. Nadanaka S, Okada T, Yoshida H, Mori K. Role of disulfide bridges formed in the luminal domain of ATF6 in sensing endoplasmic reticulum stress. *Mol Cell Biol.* 2007;27:1027-43.
23. Higa A, Taouji S, Lhomond S, Jensen D, Fernandez-Zapico ME, Simpson JC, et al. Endoplasmic reticulum stress-activated transcription factor ATF6alpha requires the disulfide isomerase PDIA5 to modulate chemoresistance. *Mol Cell Biol.* 2014;34:1839-49.
24. Yamamoto K, Sato T, Matsui T, Sato M, Okada T, Yoshida H, et al. Transcriptional induction of mammalian ER quality control proteins is mediated by single or combined action of ATF6alpha and XBP1. *Dev Cell.* 2007;13:365-76.
25. Yoshida H, Okada T, Haze K, Yanagi H, Yura T, Negishi M, et al. ATF6 activated by proteolysis binds in the presence of NF-Y (CBF) directly to the cis-acting element responsible for the mammalian unfolded protein response. *Mol Cell Biol.* 2000;20:6755-67.
26. Asada R, Kanemoto S, Kondo S, Saito A, Imaizumi K. The signalling from endoplasmic reticulum-resident bZIP transcription factors involved in diverse cellular physiology. *J Biochem.* 2011;149:507-18.
27. Hino K, Saito A, Kido M, Kanemoto S, Asada R, Takai T, et al. Master regulator for chondrogenesis, Sox9, regulates transcriptional activation of the endoplasmic reticulum stress transducer BBF2H7/CREB3L2 in chondrocytes. *J Biol Chem.* 2014;289:13810-20.
28. Saito A, Kanemoto S, Zhang Y, Asada R, Hino K, Imaizumi K. Chondrocyte proliferation regulated by secreted luminal domain of ER stress transducer BBF2H7/CREB3L2. *Mol Cell.* 2013;53:127-39.
29. Adachi Y, Yamamoto K, Okada T, Yoshida H, Harada A, Mori K. ATF6 is a transcription factor specializing in the regulation of quality control proteins in the endoplasmic reticulum. *Cell Struct Funct.* 2008;33:75-89.
30. Schewe DM, Aguirre-Ghiso JA. ATF6alpha-Rheb-mTOR signaling promotes survival of dormant tumor cells in vivo. *Proc Natl Acad Sci U S A.* 2008;105:10519-24.
31. Calfon M, Zeng H, Urano F, Till JH, Hubbard SR, Harding HP, et al. IRE1 couples endoplasmic reticulum load to secretory capacity by processing the XBP-1 mRNA. *Nature.* 2002;415:92-6.
32. Shen X, Ellis RE, Lee K, Liu CY, Yang K, Solomon A, et al. Complementary signaling pathways regulate the unfolded protein response and are required for *C. elegans* development. *Cell.* 2001;107:893-903.
33. Yoshida H, Matsui T, Yamamoto A, Okada T, Mori K. XBP1 mRNA is induced by ATF6 and spliced by IRE1 in response to ER stress to produce a highly active transcription factor. *Cell.* 2001;107:881-91.
34. Lee K, Tirasophon W, Shen X, Michalak M, Prywes R, Okada T, et al. IRE1-mediated unconventional mRNA splicing and S2P-mediated ATF6 cleavage merge to regulate XBP1 in signaling the unfolded protein response. *Genes Dev.* 2002;16:452-66.
35. Maurel M, Chevet E, Tavernier J, Gerlo S. Getting RIDD of RNA: IRE1 in cell fate regulation. *Trends Biochem Sci.* 2014;39:245-54.
36. Hollien J, Lin JH, Li H, Stevens N, Walter P, Weissman JS. Regulated Ire1-dependent decay of messenger RNAs in mammalian cells. *J Cell Biol.* 2009;186:323-31.
37. Hollien J, Weissman JS. Decay of endoplasmic reticulum-localized mRNAs during the unfolded protein response. *Science.* 2006;313:104-7.

38. Iwawaki T, Hosoda a, Okuda T, Kamigori Y, Nomura-Furuwatari C, Kimata Y, et al. Translational control by the ER transmembrane kinase/ribonuclease IRE1 under ER stress. *Nature cell biology*. 2001;3:158-64.
39. Lerner AG, Upton JP, Praveen PV, Ghosh R, Nakagawa Y, Igarria A, et al. IRE1alpha induces thioredoxin-interacting protein to activate the NLRP3 inflammasome and promote programmed cell death under irremediable ER stress. *Cell Metab*. 2012;16:250-64.
40. Upton JP, Wang L, Han D, Wang ES, Huskey NE, Lim L, et al. IRE1alpha cleaves select microRNAs during ER stress to derepress translation of proapoptotic Caspase-2. *Science*. 2012;338:818-22.
41. Hetz C, Martinon F, Rodriguez D, Glimcher LH. The unfolded protein response: integrating stress signals through the stress sensor IRE1alpha. *Physiol Rev*. 2011;91:1219-43.
42. Shoulders MD, Ryno LM, Genereux JC, Moresco JJ, Tu PG, Wu C, et al. Stress-independent activation of XBP1s and/or ATF6 reveals three functionally diverse ER proteostasis environments. *Cell Rep*. 2013;3:1279-92.
43. Hetz C. The unfolded protein response: controlling cell fate decisions under ER stress and beyond. *Nat Rev Mol Cell Biol*. 2012;13:89-102.
44. Tam AB, Koong AC, Niwa M. Ire1 Has Distinct Catalytic Mechanisms for XBP1/HAC1 Splicing and RIDD. *Cell Reports*. 2014;9:1-9.
45. Bouche-careilh M, Higa A, Fribourg S, Moenner M, Chevet E. Peptides derived from the bifunctional kinase/RNase enzyme IRE1{alpha} modulate IRE1{alpha} activity and protect cells from endoplasmic reticulum stress. *FASEB J*. 2011;25:3115-29.
46. Prischi F, Nowak PR, Carrara M, Ali MM. Phosphoregulation of Ire1 RNase splicing activity. *Nat Commun*. 2014;5:3554.
47. Rubio C, Pincus D, Korennykh A, Schuck S, El-Samad H, Walter P. Homeostatic adaptation to endoplasmic reticulum stress depends on Ire1 kinase activity. *J Cell Biol*. 2011;193:171-84.
48. Chawla A, Chakrabarti S, Ghosh G, Niwa M. Attenuation of yeast UPR is essential for survival and is mediated by IRE1 kinase. *J Cell Biol*. 2011;193:41-50.
49. Jurkin J, Henkel T, Nielsen AF, Minnich M, Popow J, Kaufmann T, et al. The mammalian tRNA ligase complex mediates splicing of XBP1 mRNA and controls antibody secretion in plasma cells. *EMBO J*. 2014.
50. Kosmaczewski SG, Edwards TJ, Han SM, Eckwahl MJ, Meyer BI, Peach S, et al. The RtcB RNA ligase is an essential component of the metazoan unfolded protein response. *EMBO Rep*. 2014.
51. Lu Y, Liang FX, Wang X. A synthetic biology approach identifies the mammalian UPR RNA ligase RtcB. *Mol Cell*. 2014;55:758-70.
52. Ray A, Zhang S, Rentas C, Caldwell KA, Caldwell GA. RTCB-1 Mediates Neuroprotection via XBP-1 mRNA Splicing in the Unfolded Protein Response Pathway. *J Neurosci*. 2014;34:16076-85.
53. Urano F, Wang X, Bertolotti A, Zhang Y, Chung P, Harding HP, et al. Coupling of stress in the ER to activation of JNK protein kinases by transmembrane protein kinase IRE1. *Science*. 2000;287:664-6.
54. Ma Y, Hendershot LM. The role of the unfolded protein response in tumour development: friend or foe? *Nat Rev Cancer*. 2004;4:966-77.
55. Greenman C, Stephens P, Smith R, Dalgliesh GL, Hunter C, Bignell G, et al. Patterns of somatic mutation in human cancer genomes. *Nature*. 2007;446:153-8.
56. Parsons DW, Jones S, Zhang X, Lin JC, Leary RJ, Angenendt P, et al. An integrated genomic analysis of human glioblastoma multiforme. *Science*. 2008;321:1807-12.
57. Guichard C, Amaddeo G, Imbeaud S, Ladeiro Y, Pelletier L, Maad IB, et al. Integrated analysis of somatic mutations and focal copy-number changes identifies key genes and pathways in hepatocellular carcinoma. *Nat Genet*. 2012;44:694-8.
58. Forbes SA, Tang G, Bindal N, Bamford S, Dawson E, Cole C, et al. COSMIC (the Catalogue of Somatic Mutations in Cancer): a resource to investigate acquired mutations in human cancer. *Nucleic Acids Res*. 2009;38:D652-7.

59. Xue Z, He Y, Ye K, Gu Z, Mao Y, Qi L. A conserved structural determinant located at the interdomain region of mammalian inositol-requiring enzyme 1 α . *The Journal of biological chemistry*. 2011;286:30859-66.
60. Pluquet O, Dejeans N, Bouchecareilh M, Lhomond S, Pineau R, Higa A, et al. Posttranscriptional regulation of PER1 underlies the oncogenic function of IRE α . *Cancer Res*. 2013;73:4732-43.
61. Hart LS, Cunningham JT, Datta T, Dey S, Tameire F, Lehman SL, et al. ER stress-mediated autophagy promotes Myc-dependent transformation and tumor growth. *J Clin Invest*. 2012;In press.
62. Nagy P, Varga A, Piracs K, Hegedus K, Juhasz G. Myc-driven overgrowth requires unfolded protein response-mediated induction of autophagy and antioxidant responses in *Drosophila melanogaster*. *PLoS Genet*. 2013;9:e1003664.
63. Chen X, Iliopoulos D, Zhang Q, Tang Q, Greenblatt MB, Hatziapostolou M, et al. XBP1 promotes triple-negative breast cancer by controlling the HIF1 α pathway. *Nature*. 2014;508:103-7.
64. Cornejo VH, Hetz C. The unfolded protein response in Alzheimer's disease. *Semin Immunopathol*. 2013;35:277-92.
65. Lee A-H, Iwakoshi NN, Glimcher LH. XBP-1 regulates a subset of endoplasmic reticulum resident chaperone genes in the unfolded protein response. *Mol Cell Biol*. 2003;23:7448-59.
66. Acosta-Alvear D, Zhou Y, Blais A, Tsikitis M, Lents NH, Arias C, et al. XBP1 controls diverse cell type- and condition-specific transcriptional regulatory networks. *Mol Cell*. 2007;27:53-66.
67. Harding HP, Zhang Y, Zeng H, Novoa I, Lu PD, Calton M, et al. An integrated stress response regulates amino acid metabolism and resistance to oxidative stress. *Mol Cell*. 2003;11:619-33.
68. Shaffer AL, Shapiro-Shelef M, Iwakoshi NN, Lee AH, Qian SB, Zhao H, et al. XBP1, downstream of Blimp-1, expands the secretory apparatus and other organelles, and increases protein synthesis in plasma cell differentiation. *Immunity*. 2004;21:81-93.
69. Luo R, Lu JF, Hu Q, Maity SN. CBF/NF-Y controls endoplasmic reticulum stress induced transcription through recruitment of both ATF6(N) and TBP. *J Cell Biochem*. 2008;104:1708-23.
70. Li M, Baumeister P, Roy B, Phan T, Foti D, Luo S, et al. ATF6 as a transcription activator of the endoplasmic reticulum stress element: thapsigargin stress-induced changes and synergistic interactions with NF-Y and YY1. *Mol Cell Biol*. 2000;20:5096-106.
71. Gade P, Manjegowda SB, Nallar SC, Maachani UB, Cross AS, Kalvakolanu DV. Regulation of the death-associated protein kinase 1 expression and autophagy via ATF6 requires apoptosis signal-regulating kinase 1. *Mol Cell Biol*. 2014;34:4033-48.
72. Lee J, Sun C, Zhou Y, Gokalp D, Herrema H, Park SW, et al. p38 MAPK-mediated regulation of Xbp1s is crucial for glucose homeostasis. *Nat Med*. 2011.
73. Wang FM, Chen YJ, Ouyang HJ. Regulation of unfolded protein response modulator XBP1s by acetylation and deacetylation. *Biochem J*. 2010;433:245-52.
74. Chen H, Qi L. SUMO modification regulates the transcriptional activity of XBP1. *Biochem J*. 2010;429:95-102.
75. Ameri K, Harris AL. Activating transcription factor 4. *Int J Biochem Cell Biol*. 2008;40:14-21.
76. Han J, Back SH, Hur J, Lin YH, Gildersleeve R, Shan J, et al. ER-stress-induced transcriptional regulation increases protein synthesis leading to cell death. *Nat Cell Biol*. 2013;15:481-90.
77. Huh WJ, Esen E, Geahlen JH, Bredemeyer AJ, Lee AH, Shi G, et al. XBP1 controls maturation of gastric zymogenic cells by induction of MIST1 and expansion of the rough endoplasmic reticulum. *Gastroenterology*. 2010;139:2038-49.
78. Hu CC, Dougan SK, McGehee AM, Love JC, Ploegh HL. XBP-1 regulates signal transduction, transcription factors and bone marrow colonization in B cells. *EMBO J*. 2009;28:1624-36.

79. Wang M, Kaufman RJ. The impact of the endoplasmic reticulum protein-folding environment on cancer development. *Nat Rev Cancer*. 2014;14:581-97.
80. Mujtaba T, Dou QP. Advances in the understanding of mechanisms and therapeutic use of bortezomib. *Discov Med*. 2011;12:471-80.
81. Kardosh A, Golden EB, Pyrko P, Uddin J, Hofman FM, Chen TC, et al. Aggravated endoplasmic reticulum stress as a basis for enhanced glioblastoma cell killing by bortezomib in combination with celecoxib or its non-coxib analogue, 2,5-dimethyl-celecoxib. *Cancer Res*. 2008;68:843-51.
82. Sidrauski C, McGeachy AM, Ingolia NT, Walter P. The small molecule ISRIB reverses the effects of eIF2alpha phosphorylation on translation and stress granule assembly. *Elife*. 2015;4.
83. Halliday M, Radford H, Sekine Y, Moreno J, Verity N, le Quesne J, et al. Partial restoration of protein synthesis rates by the small molecule ISRIB prevents neurodegeneration without pancreatic toxicity. *Cell Death Dis*. 2015;6:e1672.
84. Lee AH, Iwakoshi NN, Anderson KC, Glimcher LH. Proteasome inhibitors disrupt the unfolded protein response in myeloma cells. *Proc Natl Acad Sci U S A*. 2003;100:9946-51.
85. Hetz C, Chevet E, Harding HP. Targeting the unfolded protein response in disease. *Nat Rev Drug Discov*. 2013;12:703-19.
86. Carrasco DR, Sukhdeo K, Protopopova M, Sinha R, Enos M, Carrasco DE, et al. The differentiation and stress response factor XBP-1 drives multiple myeloma pathogenesis. *Cancer Cell*. 2007;11:349-60.
87. Sengupta S, Sharma CG, Jordan VC. Estrogen regulation of X-box binding protein-1 and its role in estrogen induced growth of breast and endometrial cancer cells. *Horm Mol Biol Clin Investig*. 2010;2:235-43.
88. Ding L, Yan J, Zhu J, Zhong H, Lu Q, Wang Z, et al. Ligand-independent activation of estrogen receptor alpha by XBP-1. *Nucleic Acids Res*. 2003;31:5266-74.
89. Raina K, Noblin DJ, Serebrenik YV, Adams A, Zhao C, Crews CM. Targeted protein destabilization reveals an estrogen-mediated ER stress response. *Nat Chem Biol*. 2014;10:957-62.
90. Hu R, Warri A, Jin L, Zwart A, Riggins RB, Clarke R. NFkappaB Signaling is required for XBP1 (U and S) Mediated Effects on Antiestrogen Responsiveness and Cell Fate Decisions in Breast Cancer. *Mol Cell Biol*. 2014.
91. Gomez BP, Riggins RB, Shajahan AN, Klimach U, Wang A, Crawford AC, et al. Human X-box binding protein-1 confers both estrogen independence and antiestrogen resistance in breast cancer cell lines. *FASEB J*. 2007;21:4013-27.
92. Kharabi Masouleh B, Geng H, Hurtz C, Chan LN, Logan AC, Chang MS, et al. Mechanistic rationale for targeting the unfolded protein response in pre-B acute lymphoblastic leukemia. *Proc Natl Acad Sci U S A*. 2014;111:E2219-28.
93. Tang CH, Ranatunga S, Kriss CL, Cubitt CL, Tao J, Pinilla-Ibarz JA, et al. Inhibition of ER stress-associated IRE-1/XBP-1 pathway reduces leukemic cell survival. *J Clin Invest*. 2014;124:2585-98.
94. Dejeans N, Manie S, Hetz C, Bard F, Hupp T, Agostinis P, et al. Addicted to secrete - novel concepts and targets in cancer therapy. *Trends Mol Med*. 2014;20:242-50.
95. Gambella M, Rocci A, Passera R, Gay F, Omede P, Crippa C, et al. High XBP1 expression is a marker of better outcome in multiple myeloma patients treated with bortezomib. *Haematologica*. 2014;99:e14-6.
96. DeBerardinis RJ, Lum JJ, Hatzivassiliou G, Thompson CB. The biology of cancer: metabolic reprogramming fuels cell growth and proliferation. *Cell Metab*. 2008;7:11-20.
97. Blais JD, Addison CL, Edge R, Falls T, Zhao H, Wary K, et al. Perk-dependent translational regulation promotes tumor cell adaptation and angiogenesis in response to hypoxic stress. *Mol Cell Biol*. 2006;26:9517-32.
98. Walter P, Ron D. The unfolded protein response: from stress pathway to homeostatic regulation. *Science*. 2011;334:1081-6.
99. Harding HP, Zhang Y, Ron D. Protein translation and folding are coupled by an endoplasmic-reticulum-resident kinase. *Nature*. 1999;397:271-4.

100. Rzymiski T, Milani M, Singleton DC, Harris AL. Role of ATF4 in regulation of autophagy and resistance to drugs and hypoxia. *Cell Cycle*. 2009;8:3838-47.
101. Deng Y, Wang ZV, Tao C, Gao N, Holland WL, Ferdous A, et al. The Xbp1s/GalE axis links ER stress to postprandial hepatic metabolism. *J Clin Invest*. 2013;123:455-68.
102. Wang ZV, Deng Y, Gao N, Pedrozo Z, Li DL, Morales CR, et al. Spliced X-box binding protein 1 couples the unfolded protein response to hexosamine biosynthetic pathway. *Cell*. 2014;156:1179-92.
103. Zhou Y, Lee J, Reno CM, Sun C, Park SW, Chung J, et al. Regulation of glucose homeostasis through a XBP-1-FoxO1 interaction. *Nat Med*. 2011;17:356-65.
104. Safra M, Fickentscher R, Levi-Ferber M, Danino YM, Haviv-Chesner A, Hansen M, et al. The FOXO transcription factor DAF-16 bypasses ire-1 requirement to promote endoplasmic reticulum homeostasis. *Cell Metab*. 2014;20:870-81.
105. Vidal RL, Figueroa A, Court FA, Thielen P, Molina C, Wirth C, et al. Targeting the UPR transcription factor XBP1 protects against Huntington's disease through the regulation of FoxO1 and autophagy. *Hum Mol Genet*. 2012;21:2245-62.
106. Bi M, Naczki C, Koritzinsky M, Fels D, Blais J, Hu N, et al. ER stress-regulated translation increases tolerance to extreme hypoxia and promotes tumor growth. *EMBO J*. 2005;24:3470-81.
107. Rouschop KM, van den Beucken T, Dubois L, Niessen H, Bussink J, Savelkoul K, et al. The unfolded protein response protects human tumor cells during hypoxia through regulation of the autophagy genes MAP1LC3B and ATG5. *J Clin Invest*. 2010;120:127-41.
108. Ogata M, Hino S, Saito A, Morikawa K, Kondo S, Kanemoto S, et al. Autophagy is activated for cell survival after endoplasmic reticulum stress. *Mol Cell Biol*. 2006;26:9220-31.
109. Robinson KS, Clements A, Williams AC, Berger CN, Frankel G. Bax inhibitor 1 in apoptosis and disease. *Oncogene*. 2011;30:2391-400.
110. Rojas-Rivera D, Hetz C. TMBIM protein family: ancestral regulators of cell death. *Oncogene*. 2015;34:269-80.
111. Hetz C, Thielen P, Matus S, Nassif M, Court F, Kiffin R, et al. XBP-1 deficiency in the nervous system protects against amyotrophic lateral sclerosis by increasing autophagy. *Genes Dev*. 2009;23:2294-306.
112. Yamamori T, Meike S, Nagane M, Yasui H, Inanami O. ER stress suppresses DNA double-strand break repair and sensitizes tumor cells to ionizing radiation by stimulating proteasomal degradation of Rad51. *FEBS Lett*. 2013;587:3348-53.
113. Epple LM, Dodd RD, Merz AL, Dechkovskaia AM, Herring M, Winston BA, et al. Induction of the unfolded protein response drives enhanced metabolism and chemoresistance in glioma cells. *PLoS One*. 2013;8:e73267.
114. Hsu JL, Chiang PC, Guh JH. Tunicamycin induces resistance to camptothecin and etoposide in human hepatocellular carcinoma cells: role of cell-cycle arrest and GRP78. *Naunyn Schmiedeberg's Arch Pharmacol*. 2009;380:373-82.
115. Al-Rawashdeh FY, Scriven P, Cameron IC, Vergani PV, Wyld L. Unfolded protein response activation contributes to chemoresistance in hepatocellular carcinoma. *Eur J Gastroenterol Hepatol*. 2010;22:1099-105.
116. Feng R, Zhai WL, Yang HY, Jin H, Zhang QX. Induction of ER stress protects gastric cancer cells against apoptosis induced by cisplatin and doxorubicin through activation of p38 MAPK. *Biochem Biophys Res Commun*. 2011;406:299-304.
117. Strome ED, Wu X, Kimmel M, Plon SE. Heterozygous screen in *Saccharomyces cerevisiae* identifies dosage-sensitive genes that affect chromosome stability. *Genetics*. 2008;178:1193-207.
118. Henry KA, Blank HM, Hoose SA, Polymenis M. The unfolded protein response is not necessary for the G1/S transition, but it is required for chromosome maintenance in *Saccharomyces cerevisiae*. *PLoS One*. 2010;5:e12732.
119. He L, Kim SO, Kwon O, Jeong SJ, Kim MS, Lee HG, et al. ATM blocks tunicamycin-induced endoplasmic reticulum stress. *FEBS Lett*. 2009;583:903-8.

120. Dioufa N, Chatzistamou I, Farmaki E, Papavassiliou AG, Kiaris H. p53 antagonizes the unfolded protein response and inhibits ground glass hepatocyte development during endoplasmic reticulum stress. *Exp Biol Med (Maywood)*. 2009;237:1173-80.
121. Duplan E, Giaime E, Viotti J, Sevalle J, Corti O, Brice A, et al. ER-stress-associated functional link between Parkin and DJ-1 via a transcriptional cascade involving the tumor suppressor p53 and the spliced X-box binding protein XBP-1. *J Cell Sci*. 2013;126:2124-33.
122. Mlynarczyk C, Fahraeus R. Endoplasmic reticulum stress sensitizes cells to DNA damage-induced apoptosis through p53-dependent suppression of p21(CDKN1A). *Nat Commun*. 2014;5:5067.
123. Thomas SE, Malzer E, Ordonez A, Dalton LE, van 't Wout EF, Liniker E, et al. p53 and translation attenuation regulate distinct cell cycle checkpoints during endoplasmic reticulum (ER) stress. *J Biol Chem*. 2013;288:7606-17.
124. Zhang F, Hamanaka RB, Bobrovnikova-Marjon E, Gordan JD, Dai MS, Lu H, et al. Ribosomal stress couples the unfolded protein response to p53-dependent cell cycle arrest. *J Biol Chem*. 2006;281:30036-45.
125. Li J, Lee B, Lee AS. Endoplasmic reticulum stress-induced apoptosis: multiple pathways and activation of p53-up-regulated modulator of apoptosis (PUMA) and NOXA by p53. *J Biol Chem*. 2006;281:7260-70.
126. Bobrovnikova-Marjon E, Grigoriadou C, Pytel D, Zhang F, Ye J, Koumenis C, et al. PERK promotes cancer cell proliferation and tumor growth by limiting oxidative DNA damage. *Oncogene*. 2010;29:3881-95.
127. Verfaillie T, Rubio N, Garg AD, Bultynck G, Rizzuto R, Decuypere JP, et al. PERK is required at the ER-mitochondrial contact sites to convey apoptosis after ROS-based ER stress. *Cell Death Differ*. 2012;19:1880-91.
128. Nagelkerke A, Bussink J, van der Kogel AJ, Sweep FC, Span PN. The PERK/ATF4/LAMP3-arm of the unfolded protein response affects radioresistance by interfering with the DNA damage response. *Radiother Oncol*. 2013;108:415-21.
129. Zitvogel L, Galluzzi L, Smyth MJ, Kroemer G. Mechanism of action of conventional and targeted anticancer therapies: reinstating immunosurveillance. *Immunity*. 2013;39:74-88.
130. Marza E, Taouji S, Barroso K, Raymond AA, Guignard L, Bonneau M, et al. Genome-wide screen identifies a novel p97/CDC-48-dependent pathway regulating ER-stress-induced gene transcription. *EMBO Rep*. 2015.
131. Periz G, Lu J, Zhang T, Kankel MW, Jablonski AM, Kalb R, et al. Regulation of Protein Quality Control by UBE4B and LSD1 through p53-Mediated Transcription. *PLoS Biol*. 2015;13:e1002114.
132. Chhabra R, Dubey R, Saini N. Gene expression profiling indicate role of ER stress in miR-23a~27a~24-2 cluster induced apoptosis in HEK293T cells. *RNA Biol*. 2011;8:648-64.
133. Yang F, Zhang L, Wang F, Wang Y, Huo XS, Yin YX, et al. Modulation of the unfolded protein response is the core of microRNA-122-involved sensitivity to chemotherapy in hepatocellular carcinoma. *Neoplasia*. 2011;13:590-600.
134. Wang X, Guo B, Li Q, Peng J, Yang Z, Wang A, et al. miR-214 targets ATF4 to inhibit bone formation. *Nat Med*. 2013;19:93-100.
135. Duan Q, Wang X, Gong W, Ni L, Chen C, He X, et al. ER stress negatively modulates the expression of the miR-199a/214 cluster to regulates tumor survival and progression in human hepatocellular cancer. *PLoS One*. 2012;7:e31518.
136. Ryu S, McDonnell K, Choi H, Gao D, Hahn M, Joshi N, et al. Suppression of miRNA-708 by polycomb group promotes metastases by calcium-induced cell migration. *Cancer Cell*. 2013;23:63-76.
137. Gupta S, Read DE, Deepti A, Cawley K, Gupta A, Oommen D, et al. Perk-dependent repression of miR-106b-25 cluster is required for ER stress-induced apoptosis. *Cell Death Dis*. 2012;3:e333.
138. Byrd AE, Aragon IV, Brewer JW. MicroRNA-30c-2* limits expression of proadaptive factor XBP1 in the unfolded protein response. *J Cell Biol*. 2012;196:689-98.

139. Chitnis NS, Pytel D, Bobrovnikova-Marjon E, Pant D, Zheng H, Maas NL, et al. miR-211 is a prosurvival microRNA that regulates chop expression in a PERK-dependent manner. *Mol Cell*. 2012;48:353-64.
140. Sakaki K, Yoshina S, Shen X, Han J, DeSantis MR, Xiong M, et al. RNA surveillance is required for endoplasmic reticulum homeostasis. *Proceedings of the National Academy of Sciences of the United States of America*. 2012;109:8079-84.
141. Dejeans N, Pluquet O, Lhomond S, Grise F, Bouchecareilh M, Juin A, et al. Autocrine control of glioma cells adhesion and migration through IRE1alpha-mediated cleavage of SPARC mRNA. *J Cell Sci*. 2012;125:4278-87.
142. Maurel M, Dejeans N, Taouji S, Chevet E, Grosset CF. MicroRNA-1291-mediated silencing of IRE1alpha enhances Glypican-3 expression. *RNA*. 2013;19:778-88.
143. Urra H, Dufey E, Lisbona F, Rojas-Rivera D, Hetz C. When ER stress reaches a dead end. *Biochim Biophys Acta*. 2013;1833:3507-17.
144. Sandow JJ, Dorstyn L, O'Reilly LA, Tailleur M, Kumar S, Strasser A, et al. ER stress does not cause upregulation and activation of caspase-2 to initiate apoptosis. *Cell Death Differ*. 2013;21:475-80.
145. Li H, Yang BB. Stress response of glioblastoma cells mediated by miR-17-5p targeting PTEN and the passenger strand miR-17-3p targeting MDM2. *Oncotarget*. 2013;3:1653-68.
146. Shan SW, Fang L, Shatseva T, Rutnam ZJ, Yang X, Du W, et al. Mature miR-17-5p and passenger miR-17-3p induce hepatocellular carcinoma by targeting PTEN, GalNT7 and vimentin in different signal pathways. *J Cell Sci*. 2013;126:1517-30.
147. Yang X, Du WW, Li H, Liu F, Khorshidi A, Rutnam ZJ, et al. Both mature miR-17-5p and passenger strand miR-17-3p target TIMP3 and induce prostate tumor growth and invasion. *Nucleic Acids Res*. 2013;41:9688-704.
148. Lichner Z, Saleh C, Subramaniam V, Seivwright A, Prud'homme GJ, Yousef GM. miR-17 inhibition enhances the formation of kidney cancer spheres with stem cell/ tumor initiating cell properties. *Oncotarget*. 2014.
149. Park D, Lee SC, Park JW, Cho SY, Kim HK. Overexpression of miR-17 in gastric cancer is correlated with proliferation-associated oncogene amplification. *Pathol Int*. 2014;64:309-14.
150. Zhang J, Xiao Z, Lai D, Sun J, He C, Chu Z, et al. miR-21, miR-17 and miR-19a induced by phosphatase of regenerating liver-3 promote the proliferation and metastasis of colon cancer. *Br J Cancer*. 2012;107:352-9.
151. Guo Y, Liu H, Zhang H, Shang C, Song Y. miR-96 regulates FOXO1-mediated cell apoptosis in bladder cancer. *Oncol Lett*. 2013;4:561-5.
152. Fendler A, Jung M, Stephan C, Erbersdobler A, Jung K, Yousef GM. The antiapoptotic function of miR-96 in prostate cancer by inhibition of FOXO1. *PLoS One*. 2013;8:e80807.
153. Guttilla IK, White BA. Coordinate regulation of FOXO1 by miR-27a, miR-96, and miR-182 in breast cancer cells. *J Biol Chem*. 2009;284:23204-16.
154. Huang X, Lv W, Zhang JH, Lu DL. miR96 functions as a tumor suppressor gene by targeting NUA1 in pancreatic cancer. *Int J Mol Med*. 2014;34:1599-605.

Legends to Figures

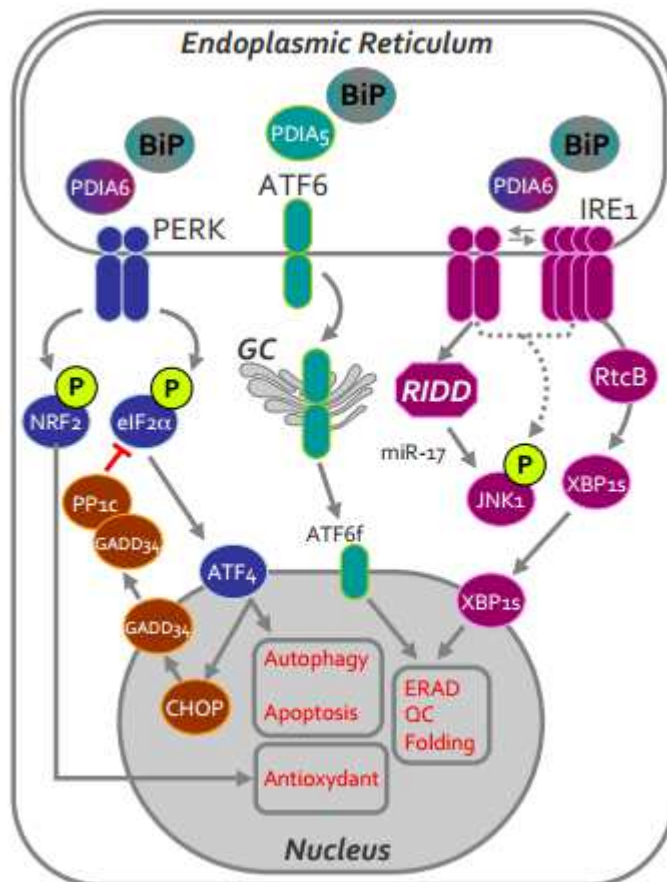


Figure 1 – Schematic representation of the Unfolded Protein Response. Purple signs represent IRE1-dependent pathways, blue signs represent PERK-dependent pathways and green signs represent ATF6-dependent signals. Orange signs represent the negative feedback loop activated downstream of PERK to dephosphorylate eIF2 α and restore translation. UPR target functions are indicated in red. Dual color signs indicate the contribution to more than one pathway following the same color code as described above.

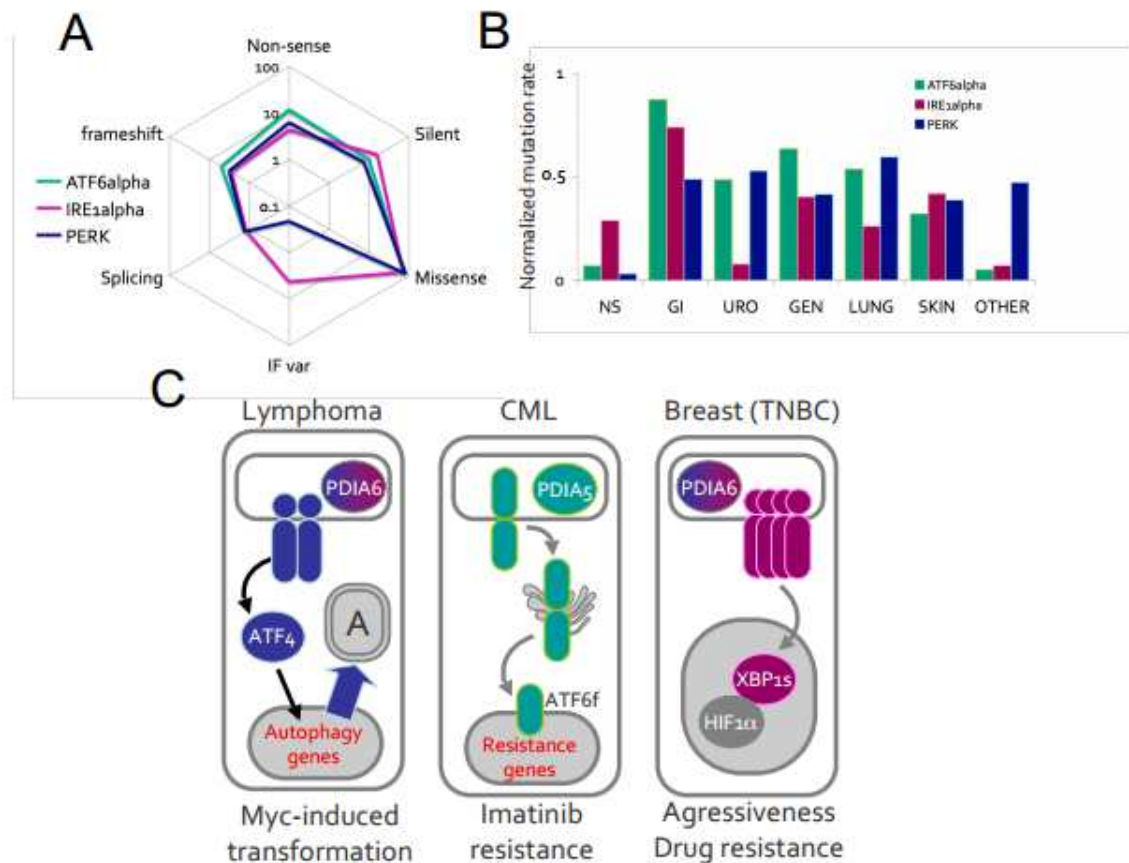


Figure 2 – UPR sensors specificity in cancers. A) By integrating data from the COSMIC, cBioportal, and IntOGen databases, the spectrum of mutations found in IRE1 (ERN1; purple), PERK (EIF2AK3, blue), or ATF6 α (green) was analyzed and represented according to the mutation type (missense, silent, nonsense, frameshift, splicing, or in-frame variation (IF var; deletion or insertion)). B) Similarly as in A, tissue distribution of the identified mutations in the three UPR sensors (same color code) was reported as normalized mutation rate integrating data from three databases (COSMIC, cBioportal, IntOGen) and reporting the percentage of mutations found in the total number of tumors sequenced. C) Three examples of PERK-, ATF6-, and IRE1-relevant cancer signaling pathways in three different cancers, Myc-induced lymphoma, chronic myeloid leukemia, and triple negative breast cancer. A: autophagosome.

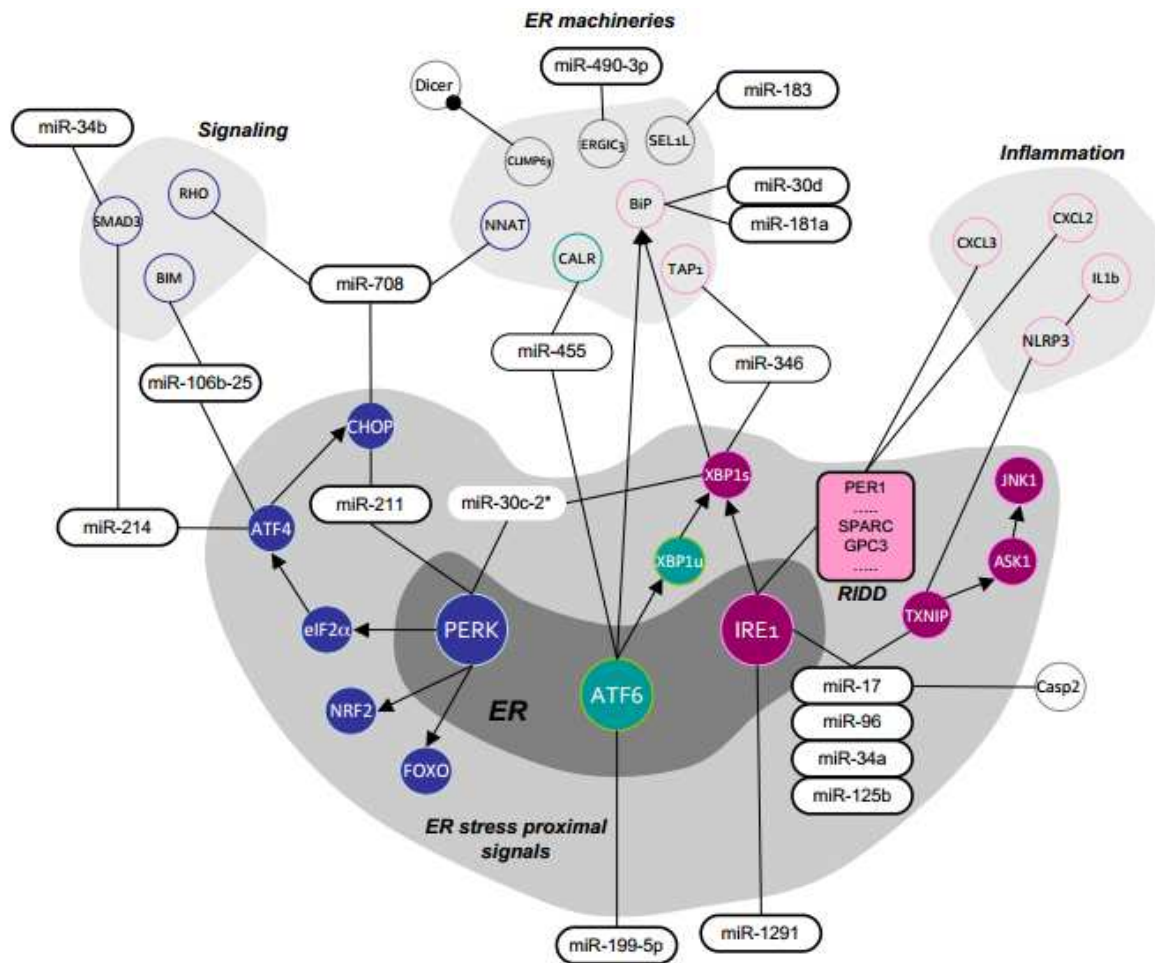


Figure 3: UPR-mediated post-transcriptional and post-translational networks in cancer. The three UPR sensor pathways depending on PERK, ATF6, and IRE1 are respectively represented in blue, green, and purple. MicroRNAs with direct evidence of a link to cancer are circled in bold, those with indirect evidence are circled, and those with no evidence are not circled.